



Hunter Creek Skier Drop

DIRECTIONS

From the Hunter Creek parking area, go back to the Hunter Creek road and travel NE through the stone pillars continuing up Red Mountain Road for approximately 6/10 mile to a 3-way intersection. Take a very hard right turn, and continue E 1/10th of a mile through two sharp switchbacks.

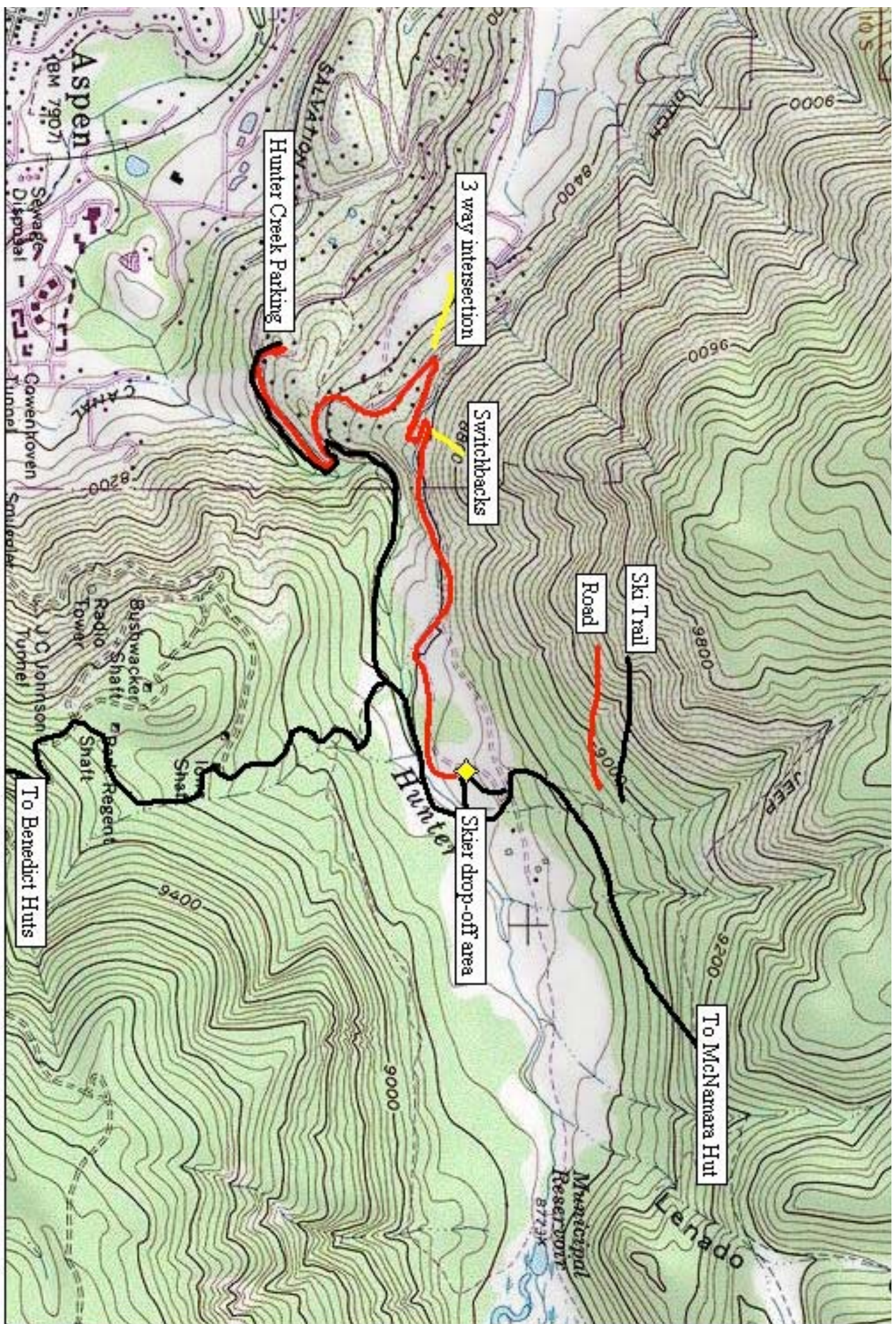
You are now on private property. Please respect the homeowners and use the map to find the drop-off area. Do not enter private, marked driveways and do not cross the bridge.

PLEASE NOTE THESE IMPORTANT RULES FOR THE SKIER DROP PARKING AREA

1. This is intended primarily as a skier drop-off area. Be prepared to drop your gear at this area and return your car to the Hunter creek parking lot.
2. There are a total of four (4) parking spots in the skier drop-off area. Two are designated parking spots for 10th Mountain hut users. One is for senior citizens and the last one is for handicap parking.

Parking spots are on a first come-first served basis.

3. You must leave a copy of your confirmation sheet on the dashboard of your car showing the designated night(s) you are at the hut.
4. Your car will be towed if:
 - (1) You don't leave proof of hut use
 - (2) You illegitimately park in the senior or handicap parking area
5. 4-wheel drive is recommended.



Map created with TOPOI © 2003 National Geographic (www.nationalgeographic.com/topo)